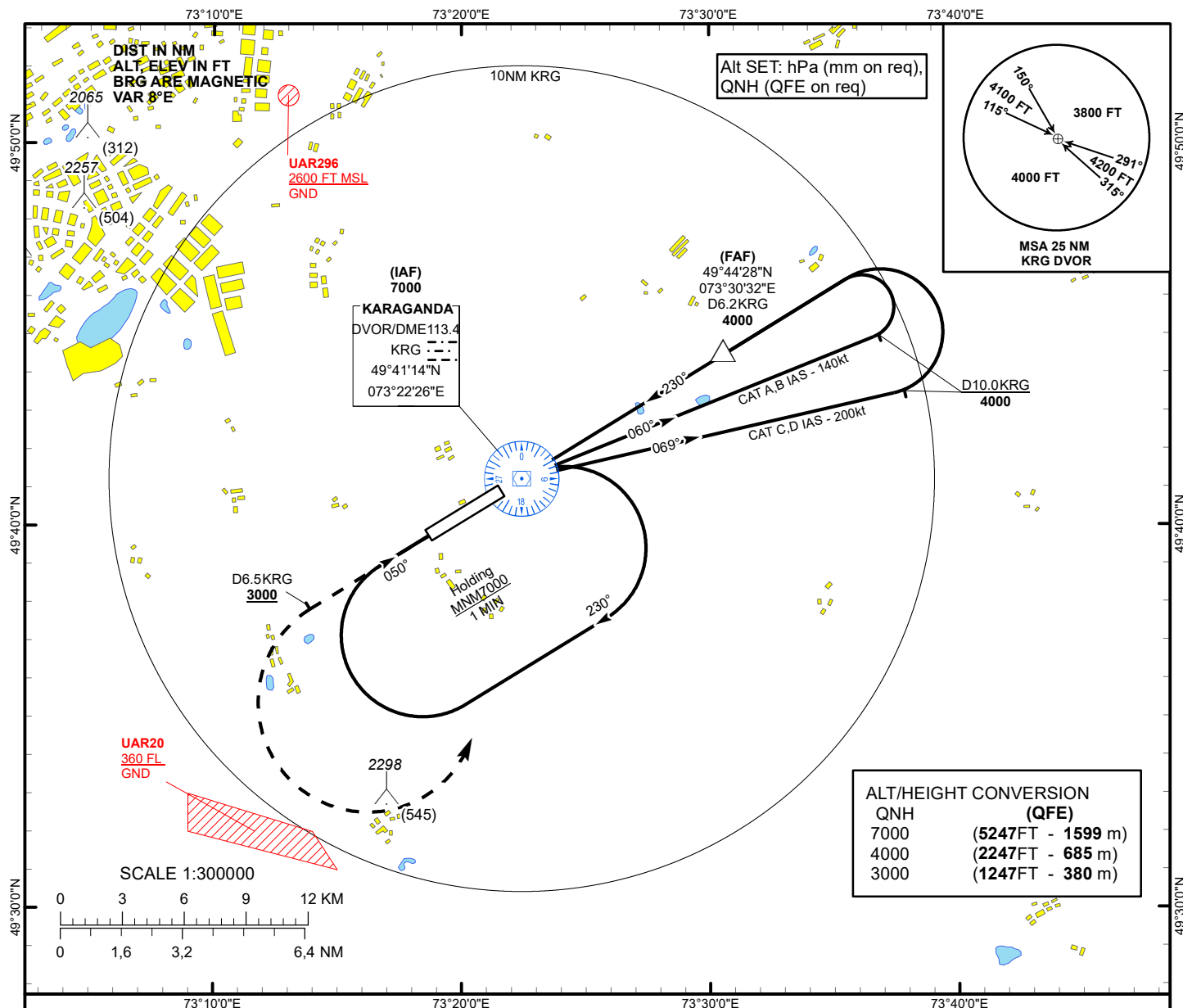


INSTRUMENT APPROACH
CHART
ICAO

AERODROME ELEV 1766 FT
HEIGHTS RELATED TO
THR RWY 23 - ELEV 1753 FT

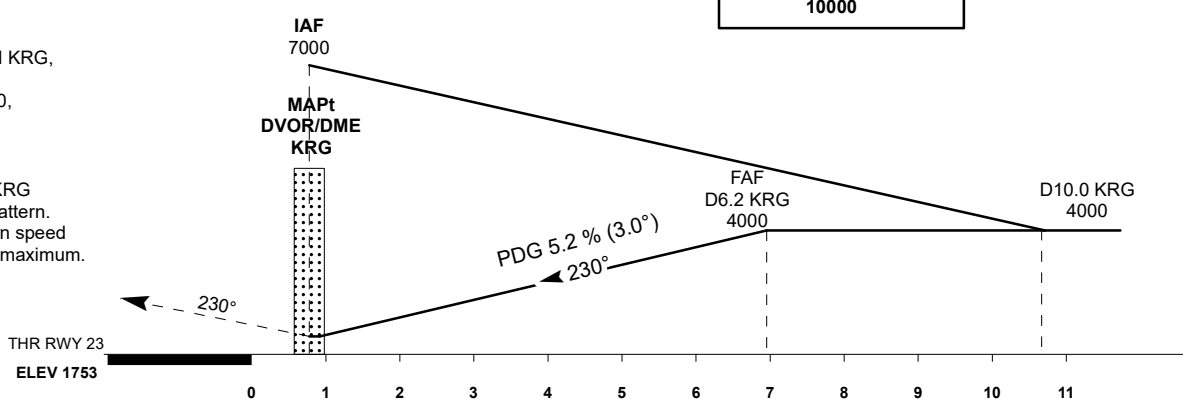
KARAGANDA TOWER 122.0
KARAGANDA ATIS (EN) 135.8
KARAGANDA ATIS (RU) 127.8

KARAGANDA
VOR/DME Z
RWY 23



MISSED APPROACH

Climb on track 230°
to 3000 or above,
outbound to D6.5NM KRG,
turn LEFT to KRG.
Climb initially to 4000,
then as directed.
RADIO FAILURE:
In the case of RCF
climb to 7000FT to KRG
and join to holding pattern.
Missed approach turn speed
limited to 250Kt IAS maximum.



Aircraft Category		A	B	C	D	DIST to THR	NM	7	6	5	4	3	2	1
Straight-in Approach OCA/H						DME KRG	NM	6.2	5.2	4.2	3.2	2.2	1.2	0.2
						ALTITUDE	FT	4000	3713	3394	3076	2757	2439	2121
						HEIGHT	FT	(2247)	(1960)	(1641)	(1323)	(1004)	(686)	(368)
Aerodrome Operating Minima MDH ft x RVR (CMV)	VOR/DME					GS	Kt	80	100	120	140	160	180	
						Desc.Rate(5.2%)	ft/min	420	530	630	740	840	950	
						FAF-MAPt(6.2NM)	min:sec	4:39	3:43	3:06	2:39	2:20	2:04	

KARAGANDA
VOR/DME Z

AERONAUTICAL DATA TABULATION

VOR approach to RWY23 from DVOR/DME KRG	
Fix/point	Coordinates
(IAF) DVOR/DME KRG	49°41'13.9"N 073°22'25.7"E
(FAF) D6.2 KRG	49°44'27.6"N 073°30'32.3"E
THR RWY23	49°40'49.44"N 073°21'24.50"E
Final approach descent angle is 3°	